



# CS-RIBX243PF & CS-RIBX243PA

Current Sensors & Switches with Relay

## Overview

Enclosed, current sensors (voltage and current output) and switches (fixed and adjustable trip points) with relay (SPST, SPDT, 3PST).



## Applications

- BACnet IP networks

## Features & Benefits

- Conveniently packaged reels in a box
- Sequential footage markings to facilitate installation
- Color coded and print legends for quick identification and troubleshooting

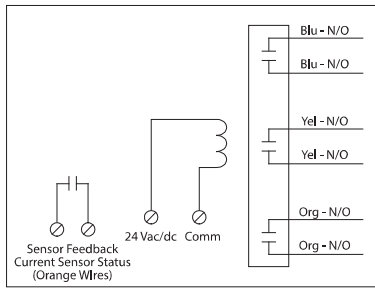
## Model Selection

CS-RIBX243PF	Enclosed Internal Fixed .50 Amp Threshold
CS-RIBX243PA	Enclosed Internal Adjustable .50-20 Amp Threshold

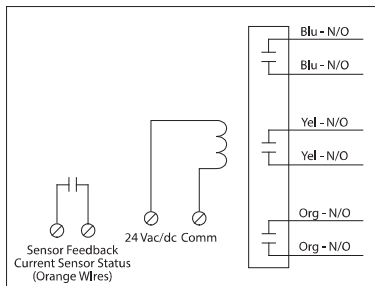
# Specifications

# Relays & Contact Type	One (1) 3PST Continuous Duty Coil
Expected Relay Life	10 million cycles minimum mechanical
Operating Temperature	-30 to 140° F
Humidity Range	5 to 95% (noncondensing)
Operate Time	20mS
Relay Status	Red LED On = Activated
Dimensions	4.00" x 4.00" x 1.80" with .50" NPT Nipple
Wire Length	16", 600V Rated
Approvals	UL Listed, UL916, UL864, C-UL, California State Fire Marshal, CE, RoHS
Housing Rating	UL Accepted for Use in Plenum, NEMA 1
Gold Flash	No
Override Switch	No
Coil Current:	
<input type="checkbox"/>	210 mA @ 24 Vac
<input type="checkbox"/>	154 mA @ 30 Vdc
Coil Voltage Input	24 Vac/dc ; 50-60 Hz
<input type="checkbox"/>	Drop Out = 3 Vac / 3.8 Vdc
<input type="checkbox"/>	Pull In = 20 Vac / 20 Vdc
Sensor Output:	
<input type="checkbox"/> Solid State Contact	30 Vac/dc, .4 Amp Max.
<input type="checkbox"/> When current sensor status is off (open), leakage	<30 uA @ 30Vac/dc
<input type="checkbox"/> When current sensor status is on (closed), voltage drop	< .3 Vac/dc @ .1 Amp
<input type="checkbox"/>	< 1.6 Vac/dc @ .4 Amp24
Sensor Type	Internal, with contact status, Current sensing on orange wires
Sensor Threshold	Fixed, .5 Amps (CS-RIBX243PF) Adjustable, .50-20 Amps (CS-RIBX243PA)
Sensor Range	.50 to 20 Amps
Sensor Output	Solid State Contact 30 Vac/dc, 0.4 Amp
Contact Ratings:	
<input type="checkbox"/> 20 Amp Resistive	300 Vac, 28 Vdc
<input type="checkbox"/> 20 Amp Ballast	277-480 Vac
<input type="checkbox"/> Not rated for Electronic Ballast	
<input type="checkbox"/> 15 Amp Resistive	600 Vac
<input type="checkbox"/> 770 VA Pilot Duty	120 Vac, 1 Phase
<input type="checkbox"/> 1158 VA Pilot Duty	240 Vac, 1 Phase
<input type="checkbox"/> 1110 VA Pilot Duty	277 Vac, 1 Phase
<input type="checkbox"/> 1640 VA Pilot Duty	480 Vac, 1 Phase
<input type="checkbox"/> 1466 VA Pilot Duty	240 Vac, 3 Phase
<input type="checkbox"/> 2112 VA Pilot Duty	480 Vac, 3 Phase
<input type="checkbox"/> Heavy Pilot Duty	600 Vac
<input type="checkbox"/> 7.5 HP	480 Vac, 3 Phase
<input type="checkbox"/> 5 HP	240 Vac, 3 Phase
<input type="checkbox"/> 3 HP	480-600 Vac, 1 Phase
<input type="checkbox"/> 2 HP	240-277 Vac, 1 Phase
<input type="checkbox"/> 1 HP	120 Vac, 1 Phase

## Block Diagram for Models CS-RIBX243PF



## Block Diagram for Models CS-RIBX243PA



Specifications subject to change without notice.  
Distech Controls, and the Distech Controls logo are trademarks of Distech Controls Inc. All other trademarks are property of their respective owner.  
©, Distech Controls Inc., 2015. All rights reserved.